



# Hemp PDI Survey



**Paul Sueper**

Phone: 402-470-8757

Email: [Paul.Sueper@usda.gov](mailto:Paul.Sueper@usda.gov)

**Project Code: 947**





# What is Hemp?

- The plant species *Cannabis sativa* L. and any part of that plant, including the seeds thereof and all derivatives, extracts, cannabinoids, isomers, acids, salts, and salts of isomers, whether growing or not, with a delta-9 tetrahydrocannabinol (THC) concentration of not more than 0.3 percent on a dry weight basis.
- Cannabinoids are chemical compounds in the plant that gives the user desired effect when consumed in oil or smokable flower form. The cannabinoids commonly sought in hemp are CBD, CBG & CBN.



# Hemp Production



- Hemp Production, Disposition and Income (PDI) is broken down between two different practices.
- Grown in the open like a field crop
- Under protections like a horticulture crop
- Production is in dry weight (lbs) and income is average price per pound or total dollars
- Questionnaire is getting the 2024 calendar year

- Hemp can be planted mechanically or transplanted from clones or nursery stock.
- Hemp can be mechanically or hand harvested.
- Product-specific Questions
  - Hemp for Flower
  - Hemp for Grain
  - Hemp for Fiber
  - Hemp for Seed



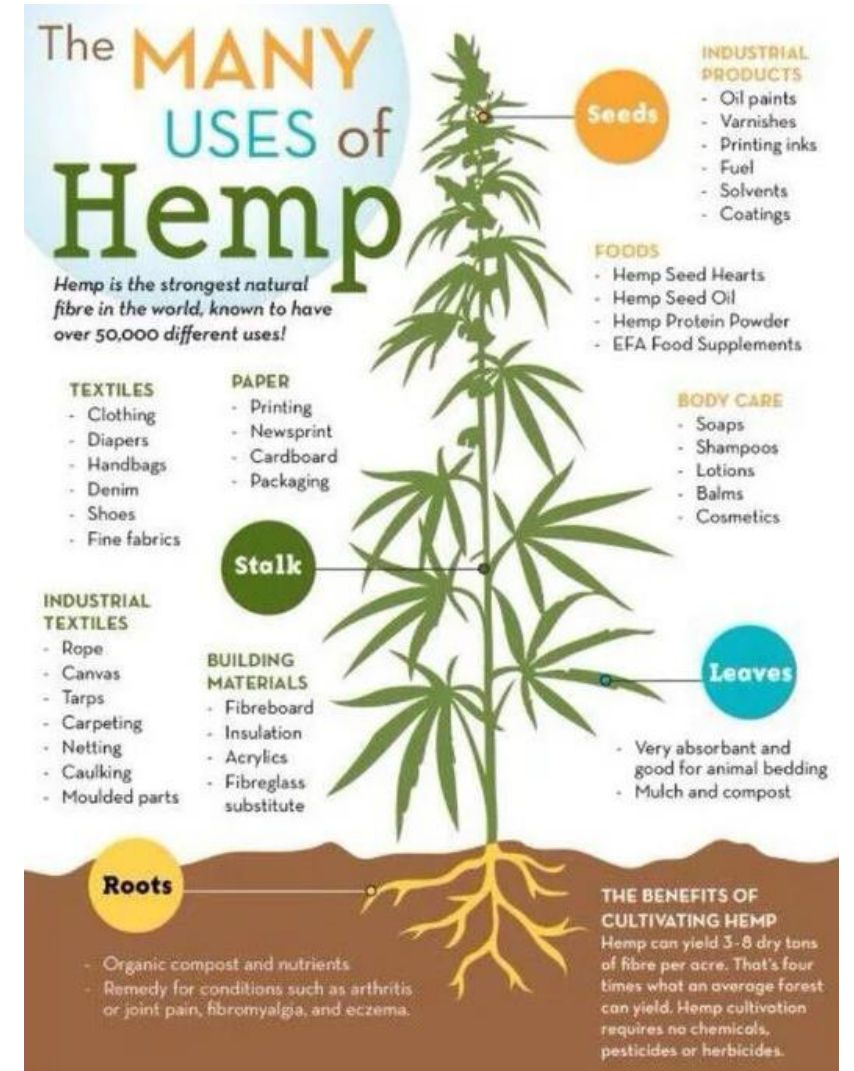


# Hemp Under Protection

- Hemp under protection includes greenhouses, hoop houses, tunnels, indoors with climate and/or light controls.
- Product specific questions
  - Hemp for Flower
  - Hemp clones or transplants
  - Hemp for Seed



- Hemp is the strongest natural fiber in the world with over 50,000 different uses.
  - Seeds
    - Industrial products, foods, body care
  - Stalk
    - Industrial textiles, paper, building materials
  - Leaves
    - Animal bedding, mulch, compost
  - Roots
    - Remedy for arthritis, eczema & fibromyalgia





# Data Collection and Due Dates



- Mail Date
  - January 21
- Data Collection Begins
  - January 30
- Callouts
  - February 20
- Data Collection Ends
  - March 6
  - All Data entered in CAPI by 11:00 pm Central Time
- Released in *National Hemp Report*
  - April 17, 2025 at 2:00 pm Central Time